



Why every development needs **Advanced**
Metering Infrastructure (AMI)

leeputilities.co.uk

Introduction	1
Developer benefits	2
Homebuyer benefits	6
Environmental and Regulatory	7
Why Leep?	8
Getting in touch	9

Network adoptions done right



Introduction

Smarter metering. Better outcomes. Built in as standard.

At Leep Utilities, we don't believe you should have to opt in to innovation. That's why AMI is standard on every one of our NAV projects, no hidden costs, no need to ask.

It's smart infrastructure that saves money, reduces hassle, improves buyer satisfaction, and gets your development future ready.



3bn litres

daily water wasted in England and Wales due to leaky pipes

6bn litres

daily water shortage in England alone by 2055

17%

Ofwat water leakage reduction target set for 2030

Developer benefits

Why your development needs AMI

The benefits of adopting AMI and smart metering go far beyond automated meter reading and national leakage reduction. We see developers gaining significant benefits across the whole of the construction process, helping to redress increased build cost, lower margins, and a difficult house-building market that's currently being squeezed

Streamlined handover and fewer snagging issues

Detect leaks **before** residents move in. Cut disputes and reduce rectification costs.



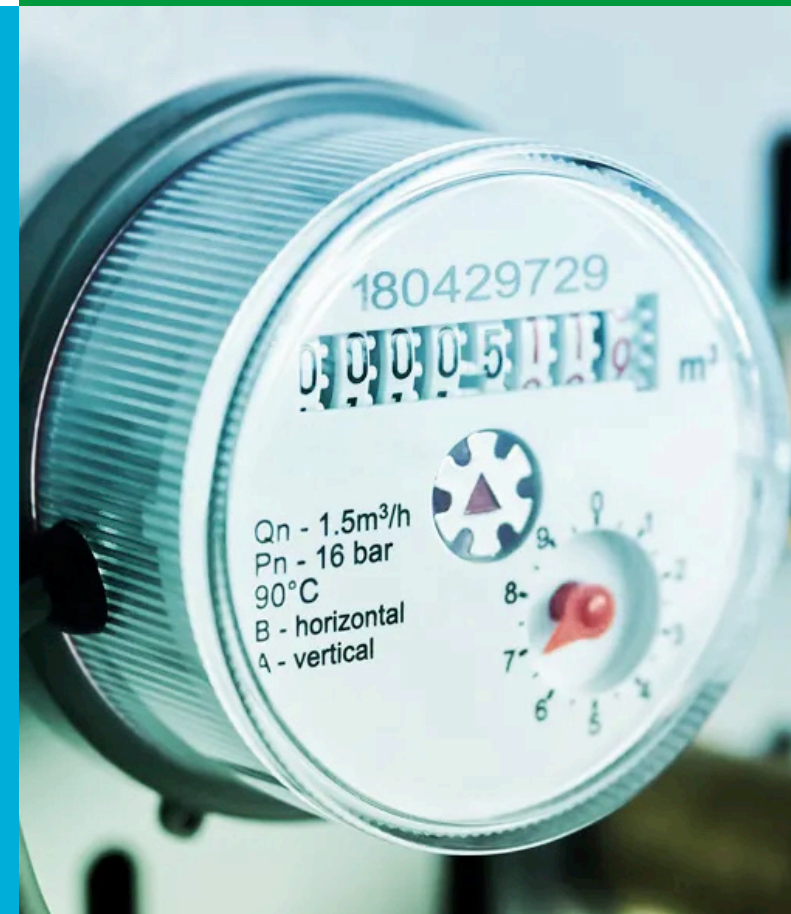
Build smarter, not bigger

Real-time data helps optimise infrastructure, enabling **higher density on constrained sites** and more efficient Section 104/106 adoption.



Lower costs and less administration

No more manual reads. No site access headaches. Less coordination required, less delay.





“We spotted a 7,000+ litre/day spike from a faulty toilet. Fixed in hours, avoiding a major billing issue.”

Managed Housing, UK

Developer benefits

Why your development needs AMI

Data-Driven Decisions

Forecast demand, stress-test networks, and make smarter infrastructure investments with **granular usage data**.

Reduce infrastructure charges

Evidence of lower usage can **cut your infrastructure costs**, with clear ROI from day one.



ESG and Net Zero Ready

Demonstrate environmental leadership with **data-driven efficiency** that supports GRESB, ISO 14001, and the Future Homes Standard.

Stand out with a competitive edge

Exceed Building Regs Part G and promote **smarter, sustainable homes** that today's buyers expect.





“A 75,000-litre/day leak was found and fixed within 30 hours on a 30-home site — avoiding costly delays.”

Tom Paton, Project Manager, Leep Utilities

Homebuyer benefits

Why Homebuyers Love AMI



Real-time usage tracking
via apps and portals



Instant leak alerts mean
fewer surprises



Accurate, fairer
billing



More sustainable
homes

Environmental and Regulatory

Positive
environmental
and regulatory
impact



Cut water waste and non-revenue water (NRW)



Eliminate manual meter readings and reduce CO₂



Improve long-term
planning and compliance



Supports Ofwat, DEFRA,
EA, and Future Homes
policy targets



Why Leep?

We include AMI in every proposal. It's built in. Not bolted on.

At Leep Utilities, we're not just providing essential services like water, electricity, and heat. We're shaping the future of sustainable infrastructure across the UK. We work with leading developers to provide sustainable and quality utility services to our partnered communities, playing a key role in innovative projects that are transforming the way people live and work

"Leep's AMI solution delivers more than just smart meters, it unlocks cost savings, a better buyer experience, and smarter, greener infrastructure."

Brian Loft, Operations Director, Leep Utilities

Let's continue the conversation

Whether you're ready to explore AMI, a new project, have questions about our adoption process, or just want to understand how we can support your utility infrastructure needs, we're here to help.

E: salesenquiries@leeputilities.co.uk

T: 0300 373 3540

Curious about what we do?

Visit leeputilities.co.uk to discover why we're the smart choice for multi-utility network adoptions.



Water

Leep Utilities

Metro Building Level 2,
33 Trafford Road
Salford
Manchester
M5 3NN

T: 0300 373 3540

W: leeputilities.co.uk

Network adoptions done right